

PRESENTATION

- This automatic soft-start, solenoid air operated monobloc unit provides two main functions:
 - **pneumatic system venting**
 - **gradual pressurisation** after an outage leading to venting of the system

SPECIFICATION

FLUID : Compressed air or neutral gas, filtered, lubricated or unlubricated
 PORTS : G3/4 to G1 1/2
 OPERATING PRESSURE : 2 to 16 bar
 MAX. FLOW (Qv at 6,3 bar) G3/4 : 10500 l/min. (ANR)
 G1- G1 1/4 - G1 1/2 : 12000 l/min. (ANR)
 OPERATING TEMPERATURE : 0°C, +50°C (+ 60°C at 12,5 bar)
 PILOT AND RETURN : pneumatic + spring

CONSTRUCTION

Body : aluminium
 Internal parts : light alloy and brass
 Seals : nitrile (NBR)



CHOICE OF EQUIPMENT

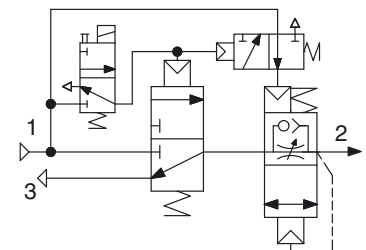
description	port size (1)	shut-off valve + soft-start unit	code		(M)
			+	solenoid valve	
3/2 NC shut-off valve and automatic soft-start system, solenoid air operated (without silencer)	G 3/4	34397006			▼
	G 1	34397007	+	1x 19201009 (3/2 NC)	
	G 1 1/4 (2)	34397008		or	
	G 1 1/2 (2)	34397009		1x 19201007 (3/2 NC)	X

(M) Manual override: ▼ (impulse-type) - X (without)

(1) Port 3 (exhaust), always G1, supplied without silencer (accessory)

(2) The G 1 1/4 and G 1 1/2 versions are composed of a G 1 version + 1 set of 2 G 1 1/4 or G 1 1/2 flanges (1 connecting flange for each end of each component). When assembling several components together (FRL, isolation valve etc...), select G 1 components and provide for 1 set of G 1 1/4 or G 1 1/2 flanges (see pages 19 and 20 for flanges assembly)

Functional diagram automatic version



OPTION

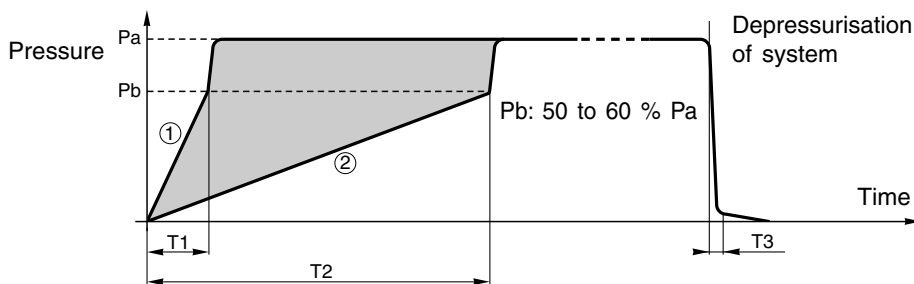
Key locking device attached to adjustment screw, supplied installed; code: **662598**

ACCESSORIES (other accessories: see pages 19 - 20)

- G1 silencer, code: **34600411**
- Key locking device supplied separately for regulator designed to receive this accessory, code: **34303050**
- Blanking kit for adjustment screw designed to receive a key locking device, code: **34307021**
- Blanking plate for adjustment screw not designed to receive a key locking device, code: **34307022**
- By-pass module, see page 14

SYSTEM PRESSURISATION AND DEPRESSURISATION CURVES

• WITH AUTOMATIC SOFT-START DEVICE



The adjustment range for the pressurisation time lies between curves (1) and (2).

The transition to full flow takes place automatically as soon as the downstream pressure reaches 50 to 60% of the upstream pressure.

Filling and venting times (in seconds):

	Time in seconds	
	10 litres	20 litres
T1 (with screw loosened by 10 turns)	3,5	5,5
T2 (with screw loosened by 1 turn)	19	31
T3 (venting time)	1,5	2,5

These times correspond to a supply pressure (Pa) of 6.3 bar, a transition pressure (Pb) of 50% to 60% Pa (not adjustable) and a downstream system capacity between 10 and 20 litres.

PRESENTATION

- This solenoid air operated monobloc unit provides two main functions:
 - **pneumatic system venting**
 - **gradual pressurisation after an outage leading to venting of the system**

SPECIFICATION

FLUID : Compressed air or neutral gas, filtered, lubricated or unlubricated

PORTS : G3/4 to G1 1/2

OPERATING PRESSURE : 2 to 16 bar

MAX. FLOW (Qv at 6,3 bar) G3/4 : 10500 l/min. (ANR)

G1- G1 1/4 - G1 1/2 : 12000 l/min. (ANR)

OPERATING TEMPERATURE : 0°C, +50°C (+ 60°C at 12,5 bar)

PILOT AND RETURN : pneumatic + spring

CONSTRUCTION

Body : aluminium

Internal parts : light alloy and brass

Seals : nitrile (NBR)

CHOICE OF EQUIPMENT

description	port size (1)	code		(M)
		shut-off valve + soft-start unit	+ solenoid valve (~ / =)	
3/2 NC shut-off valve and soft-start system, solenoid air operated (without silencer)	G 3/4	34397034	1x 19201007 (3/2 NC)	X
	G 1	34397035	1x 19201013 (3/2 NO)	X
	G 1 1/4 (2)	34397036	ou 1x 19201009 (3/2 NC)	▼
	G 1 1/2 (2)	34397037	1x 19201015 (3/2 NO)	▼

(M) Manual override: ▼ (impulse) - X (without)

(1) Port 3 (exhaust), always G1, supplied without silencer (accessory)

(2) The G 1 1/4 and G 1 1/2 versions are composed of a G 1 version + 1 set of 2 G 1 1/4 or G 1 1/2 flanges (1 connecting flange for each end of each component). When assembling several components together (FRL, isolation valve etc...), select G 1 components and provide for 1 set of G 1 1/4 or G 1 1/2 flanges (see pages 19 and 20 for flanges assembly)

OPTION

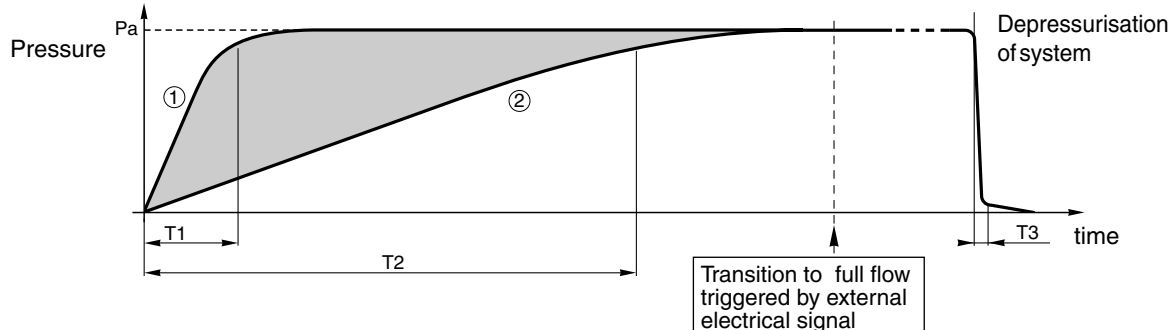
Key locking device attached to adjustment screw, supplied installed; code: **662598**

ACCESSORIES (other accessories: see pages 19 - 20)

- G1 silencer, code: **34600411**
- Key locking device supplied separately for regulator designed to receive this accessory, code: **34303050**
- Blanking kit for adjustment screw designed to receive a key locking device, code: **34307021**
- Blanking plate for adjustment screw not designed to receive a key locking device, code: **34307022**
- By-pass module, see page 14

SYSTEM PRESSURISATION AND DEPRESSURISATION CURVES

- WITH A SOLENOID/AIR CONTROLLED SOFT-START DEVICE



Unlike the automatic soft-start version, this version only authorises full flow on receiving a permanent electrical signal. The adjustment range for the pressurisation time lies between curves (1) and (2).

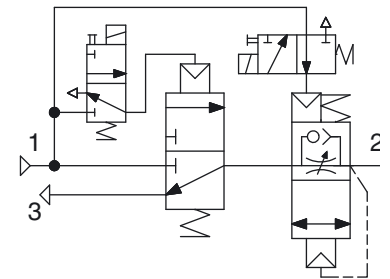
Filling and venting times (in seconds):

	Time in seconds	
	10 litres	20 litres
T1 (with screw loosened by 10 turns)	9,5	15
T2 (with screw loosened by 1 turn)	44	68
T3 (venting time)	1,5	2,5

These times correspond to a supply pressure (Pa) of 6.3 bar, a downstream system capacity of **10 and 20 litres** and a pressure of 90% Pa.



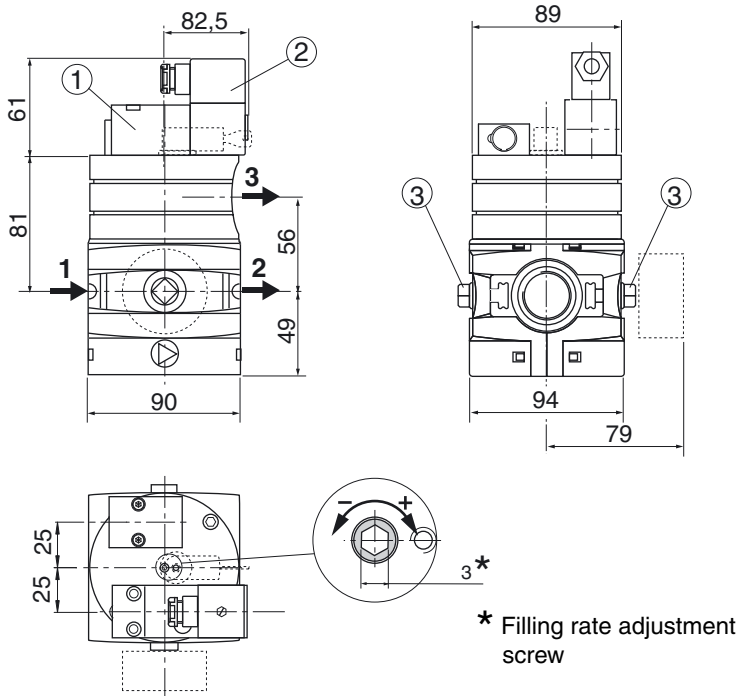
Functional diagram solenoid/air controlled version



DIMENSIONS AND WEIGHTS - G3/4 - G1 VERSIONS

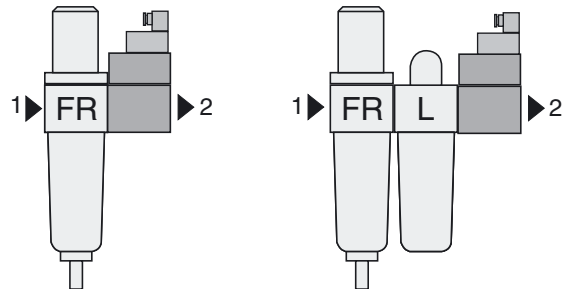
SOLENOID AIR OPERATED SHUT-OFF VALVE AND AUTOMATIC SOFT-START UNIT

Weight: 1,670 Kg



G 1 1/4 - G 1 1/2 versions- see accessories

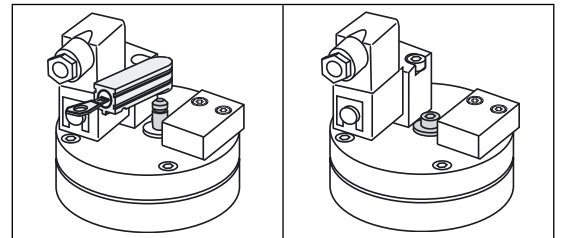
RECOMMENDED CONFIGURATIONS



LOCKING OPTIONS FOR ADJUSTMENT SCREW

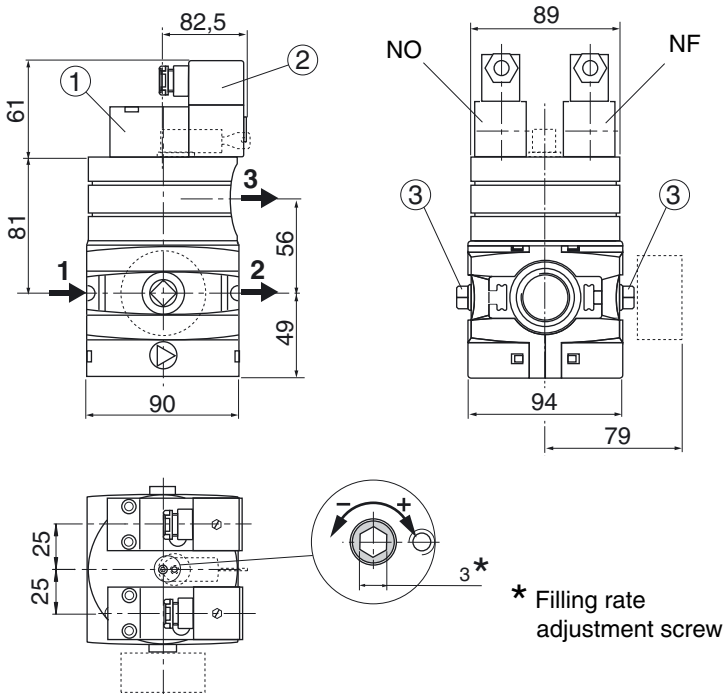
Unit with key locking device for adjustment screw

Unit with blanking plate for adjustment screw



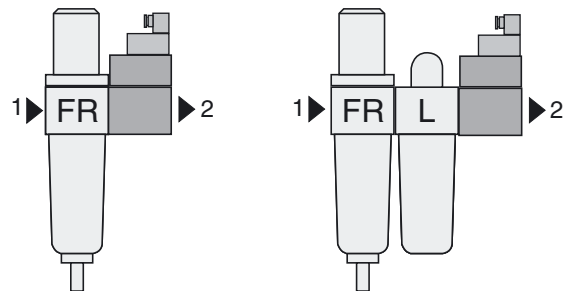
SOLENOID AIR OPERATED SHUT-OFF VALVE AND SOFT-START UNIT

Weight: 1,940 Kg



G 1 1/4 - G 1 1/2 versions- see accessories

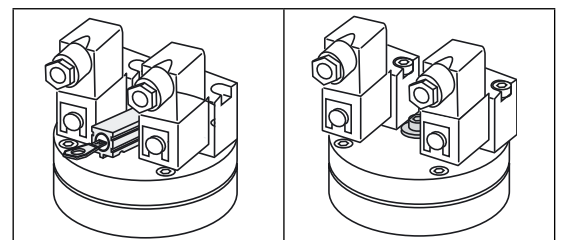
RECOMMENDED CONFIGURATIONS



LOCKING OPTIONS FOR ADJUSTMENT SCREW

Unit with key locking device for adjustment screw

Unit with blanking plate for adjustment screw



- ① 3/2 pilot solenoid valve
- ② Connector to ISO 4400, rotatable by 180° increments
- ③ 2 x G1/4 ports for mounting of a dia 50 mm 0-16 bar pressure gauge - code: **34200997** (provide for a 1/4 to 1/8 adapter), or a subbase-mount pressure switch (with hexagon adapter - see accessories), or an electronic pressure switch